



# Injury Prevention and Management program

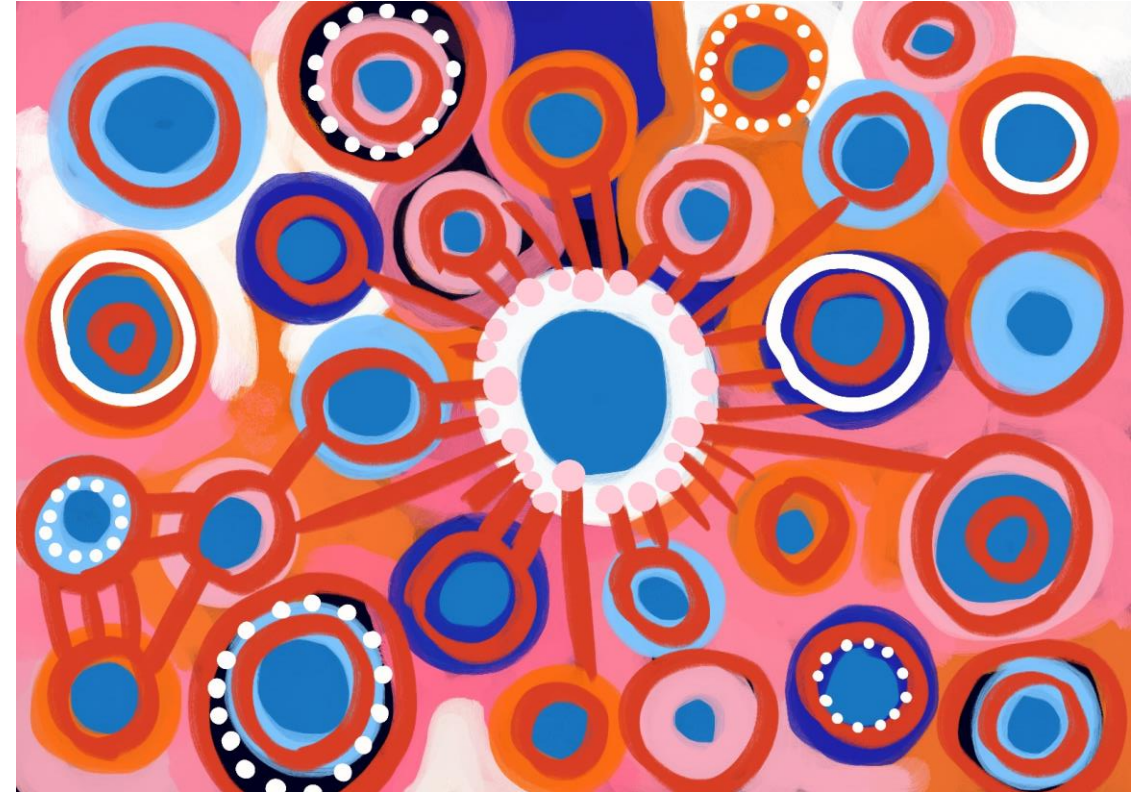
What you need to know

MARCH 2024

# Acknowledgement of Country

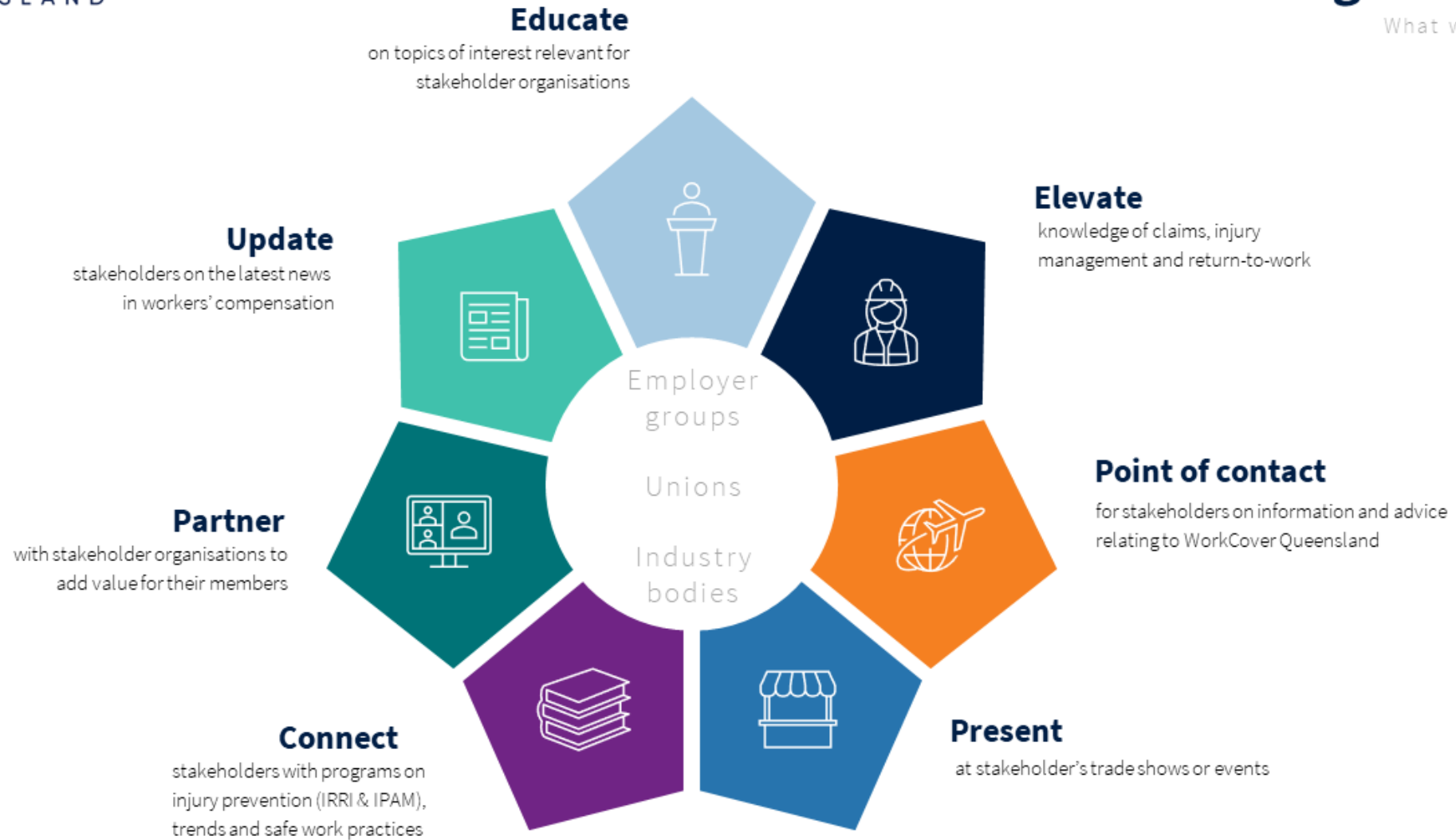
WorkCover Queensland deeply acknowledges and pays respect to all Aboriginal and Torres Strait Islander peoples, and their Elders past and present.

We thank the Traditional Custodians of Country throughout Australia for their ongoing custodianship of land, waters, culture and community.



This artwork was created for WorkCover Queensland by renowned Queensland Aboriginal artist Rachael Sarra

What we do



# Imagine...

... getting a dedicated advisor, who could work with your business to understand your needs and offer tailored advice and support on health, safety and injury management systems.

Imagine participating in a program that has led many other businesses to:

- achieve fewer workplace injuries
- lower average claim costs and workers' compensation premiums
- improve productivity.

As WorkCover Queensland policyholders, you have access to this service... and it is FREE!

# What is IPaM?

The Injury Prevention and Management (IPaM) program is a joint initiative between Workplace Health and Safety Queensland and WorkCover Queensland.

## How it works

- Free program, open to all WorkCover Queensland policyholders\*
- Participating employers are allocated a dedicated IPaM advisor who works with you to:
  - review your health, safety and injury management systems
  - identify your workplace hazards
  - assess your workplace safety capability
  - create your own tailored and specific business improvement plan.

*\*excluding Government policies*

IPaM has helped more than

**2000**  
**Queensland**  
**businesses**

to improve safety and injury  
management

# What's in it for businesses

Participating in this free program has led many businesses to:



Achieve fewer workplace injuries



Lower average claim costs and workers' compensation premiums



Improve productivity

# How to register your interest

- Take 2 minutes to complete the [registration form](#).
- You will automatically receive an email with more information.
- An IPaM advisor will then contact you to discuss your suitability and get you started.

We look forward to working alongside you to make positive changes to your workplace.



Scan the QR code above or  
go to  
[bit.ly/workcoverqld-ipam](https://bit.ly/workcoverqld-ipam)

